



# Transducers

# Veterinarian Ultrasound in a Whole New Light.

MC8-4Q



4 - 8 MHz  
Micro-convex Array  
Abdomen, basic cardiac

L12-5Q



5 - 12 MHz  
Linear Array  
Small parts, abdomen

C5-2Q



2 - 5 MHz  
Curved Array  
Large breed abdomen

P5-1XQ



1 - 5 MHz  
Phased Array  
Cardiac

L17-7HQ



7 - 17 MHz  
Linear Array  
Small parts, exotics

L17-7SQ



7 - 17 MHz  
Compact Linear Array  
Intraoperative, exotics

P5-1Q



1 - 5 MHz  
Phased Array

P7-3Q



3 - 7 MHz  
Phased Array

MC9-3TQ



3 - 9 MHz  
Micro-convex Array

VEL12-5Q



5 - 12 MHz  
Endocavity Linear Array

## Acclarix™ AX8 VET Veterinary Diagnostic Ultrasound System



GESTURE-CONTROL USER INTERFACE

APPLICATION-BASED WORKFLOW

USER-FOCUSED DESIGN

UNPARALLELED VALUE

DEFINITIVE IMAGE QUALITY



**Global Headquarters:**  
Edan Instruments, Inc. | No.15 Jinhui Rd., Jinsha Community,  
Kengzi Subdistrict, Pingshan District, Shenzhen | 518122 P.R. China  
+86.755.26898326 | www.edan.com | info@edan.com.cn  
**U.S. and Canada inquiries:**  
EDAN Diagnostics, Inc. | 9918 Via Pasar, San Diego, CA 92126  
+1.858.750.3066 | www.edandiagnostics.com | edan-info@edandiagnostics.com

© Edan Instruments, Inc. All rights reserved. Features and specifications are subject to change without prior notice. No reproduction, copy or transmission may be made without written permission. Not all products or features are available in all countries, contact Edan for local availability.



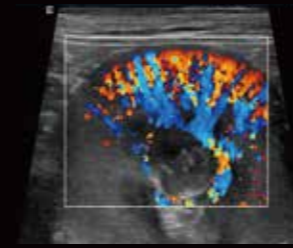
ENG-US-AX8 VET-COMPANION  
V1.6-20200101





## Definitive Image Quality

- High fidelity, high-channel count architecture combined with advanced imaging features result in superb resolution
- Tissue Adaptive Imaging (TAI) continuously and automatically optimizes imaging, reducing need to tweak controls



TAI provides excellent color sensitivity and detail to display low flows of this canine kidney.



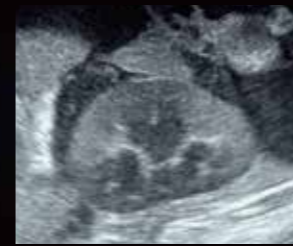
Exceptional detail resolution easily differentiates the gastric wall and confirms a foreign body.



TAI enhances detail and contrast resolution in this dog with splenic nodules and ascites.



The L12-5Q provides stunning detail resolution of the spleen and bowel layers in this dog.



The small footprint MC8-4Q provides exceptional imaging of feline infectious peritonitis.



Echogenic renal pyramids are beautifully defined in a dog with onion toxicity.



Excellent contrast and detail resolution clearly delineates canine hypertrophic pylorus.



TAI provides excellent definition of thickened bowel in feline lymphoma.

## Redefining Innovation Through Value and Performance

The Acclarix AX8 VET has been designed from the ground up with a relentless focus on delivering unexpected levels of innovation and performance at a price point that is equally surprising. Its sleek footprint contains a fully sealed control panel that eliminates debris build-up and improves reliability. The AX8 is a fully featured diagnostic ultrasound platform with advanced imaging modes, gesture control dual touch screens and a full suite of transducers - all tailored to meet the specific needs of veterinarians.

## Intelligent Workflow

- Multiple presets and measurements for veterinary applications
- Virtual TGC adjustment and auto-optimization for B-mode
- Customizable user interface for personalized workflow
- Connectivity: DICOM, 4 USB port, Ethernet, video out, PDF, AVI and BMP file export

## Distinctive Design



Fully sealed control panel eliminates debris build-up for easy cleaning



15" tilt-and-swivel monitor with specially bonded glass for increased durability



Unique dual gesture control touch screens and battery level touch sensor



Sleek, compact design facilitates maneuverability and portability