



Transducers

Veterinarian Ultrasound in a Whole New Light.

L12-5Q



5 - 12 MHz
Linear Array
Distal limb

C5-2Q



2 - 5 MHz
Curved Array
Proximal limb, SI joints, Frog, Abdomen

VEL10-4Q



4 - 8 MHz
Endorectal Array
SI joints, Reproduction

VEL8-3WQ



3 - 8 MHz
Endorectal Array
Reproduction

MC8-4Q



4 - 8 MHz
Micro-convex Array
Pastern

P5-1XQ



1 - 5 MHz
Phased Array
Cardiac

P5-1Q



1 - 5 MHz
Phased Array

P7-3Q



3 - 7 MHz
Phased Array

MC9-3TQ



3 - 9 MHz
Micro-convex Array

VEL12-5Q



5 - 12 MHz
Endocavity Linear Array

Acclarix™ AX8 VET

Veterinary Diagnostic Ultrasound System



GESTURE-CONTROL USER INTERFACE

APPLICATION-BASED WORKFLOW

USER-FOCUSED DESIGN

UNPARALLELED VALUE

DEFINITIVE IMAGE QUALITY



Global Headquarters:
Edan Instruments, Inc. | 15 Jinhui Road, Pingshan District, Shenzhen
518122 P.R. China | +86.755.26898326 | www.edan.com | info@edan.com
U.S. and Canada inquiries:
EDAN Diagnostics, Inc. | 9918 Via Pazar, San Diego, CA 92126
+1.858.750.3066 | www.edandiagnostics.com | edan-info@edandiagnostics.com

© Edan Instruments, Inc. All rights reserved. Features and specifications are subject to change without prior notice. No reproduction, copy or transmission may be made without written permission. Not all products or features are available in all countries, contact Edan for local availability.



ENG-US-AX8 VET-EQUINE
V1.0-20200226



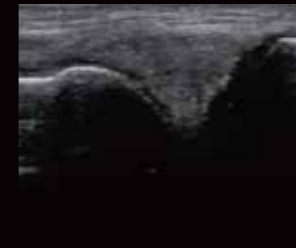


Definitive Image Quality

- High fidelity, high-channel count architecture combined with advanced imaging features result in superb resolution
- Tissue Adaptive Imaging (TAI) continuously and automatically optimizes imaging, reducing need to tweak controls



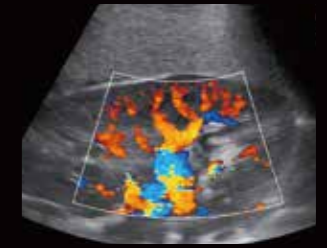
TAI enhances contrast and detail resolution to clearly define distal limb anatomy.



The L12-5Q provides excellent near field resolution and uniformity to evaluate the lateral meniscus.



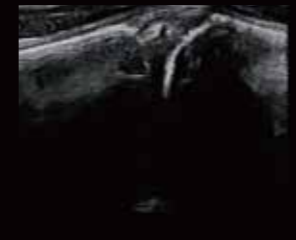
Superior contrast and detail resolution is required to identify this small DDF tendon tear.



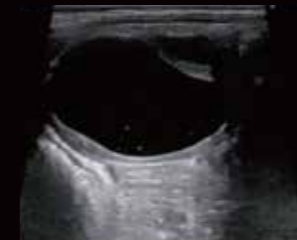
TAI provides excellent detail resolution and color sensitivity in the kidney.



Stellar imaging of the biceps tendon is easily achieved with the C5-2Q transducer.



Endorectal imaging of L6/S1 disc space demonstrates excellent detail resolution of a small fissure.



The VEL10-4Q provides sharp follicular imaging for reproductive evaluations.



Exceptional imaging of the P5-1XQ cardiac transducer to a depth of 29 cm.

Redefining Innovation Through Value and Performance

The Acclarix AX8 VET has been designed from the ground up with a relentless focus on delivering unexpected levels of innovation and performance at a price point that is equally surprising. Its sleek footprint contains a fully sealed control panel that eliminates debris build-up and improves reliability. The AX8 is a fully featured diagnostic ultrasound platform with advanced imaging modes, gesture control dual touch screens and a full suite of transducers - all tailored to meet the specific needs of veterinarians.

Intelligent Workflow

- Multiple presets and measurements for veterinary applications
- Virtual TGC adjustment and auto-optimization for B-mode
- Customizable user interface for personalized workflow
- Connectivity: DICOM, 4 USB port, Ethernet, video out, PDF, AVI and BMP file export

Distinctive Design



Fully sealed control panel eliminates debris build-up for easy cleaning



15" tilt-and-swivel monitor with specially bonded glass for increased durability



Unique dual gesture control touch screens and battery level touch sensor



Sleek, compact design facilitates maneuverability and portability