

Sleek compact design for portable exam environments



Tilt-and-swivel monitor for optimal viewing during procedures



Customizable control panel to personalize your user interface



Dual touch screens streamline exam workflow



# A Clear Vision

## Ultrasound reimaged for ease of use in point-of-care applications

Born of a vision to deliver meaningful design innovations that benefit the user, the Acclarix AX7 features a host of design breakthroughs that make day-to-day operation in point-of-care environments easy, fast and intuitive. The result is an elegant simplicity where form and function meet at the tips of your fingers.

- Unparalleled image quality with one-key optimization
- Application-specific exam and imaging presets
- Unique gesture-control user interface
- Tilt-and-swivel HD monitor
- Completely sealed control panel to aid in maintaining infection control
- Needle visualization technology improves needle identification

## Transducers

L17-7HQ



7 - 17 MHz High Frequency Linear Array

L12-5Q



5 - 12 MHz Linear Array

L17-7SQ



7 - 17 MHz High Frequency Compact Linear Array

C5-2Q



2 - 5 MHz Curved Linear Array

MC8-4Q



4 - 8 MHz Micro Convex Array

P5-1XQ



1 - 5 MHz Phased Array

### About Edan

Edan is a healthcare company dedicated to improving the human condition around the world by delivering value-driven, innovative and high-quality medical products and services. For over 20 years, Edan has been pioneering a comprehensive line of medical solutions that address a broad range of healthcare practices including:

- Diagnostic ECG
- Ultrasound Imaging
- In-Vitro Diagnostics
- Patient Monitoring
- Point-of-Care Testing

Healthcare professionals around the world depend on Edan's breakthrough medical technologies and outstanding customer support.



A world of potential

#### Global Headquarters:

Edan Instruments, Inc. | 15 Jinhui Road, Pingshan District, Shenzhen 518122 P.R. China | +86.755.26898326 | www.edan.com | info@edan.com

#### U.S. and Canada inquiries:

EDAN Diagnostics, Inc. | 9918 Via Pasar, San Diego, CA 92126 +1.858.750.3066 | www.edandiagnostics.com | edan-info@edandiagnostics.com

© Edan Instruments, Inc. All rights reserved. Features and specifications are subject to change without prior notice. No reproduction, copy or transmission may be made without written permission. Not all products or features are available in all countries, contact Edan for local availability.

ENG-US-AX7-POC V1.0-20200226

# See Point-of-Care Ultrasound in a New Way

Acclarix<sup>™</sup> AX7  
Diagnostic Ultrasound System



A world of potential



# Designed From the Ground up for Point-of-Care Ultrasound

## Redefining innovation through value and performance

It's the dawning of a new day in the world of point-of-care ultrasound—and it turns out you really can have it all. The remarkable Acclarix™ AX7 Compact Ultrasound System delivers a powerhouse combination of features to meet the demands of point-of-care imaging. The Acclarix AX7 has been designed from the ground up with a relentless focus on delivering unexpected levels of innovation and performance at a price point that is equally surprising.

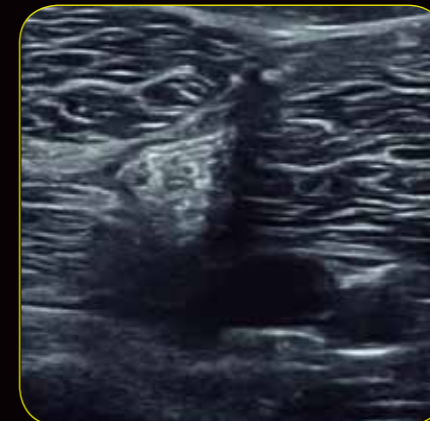
- Definitive Imaging
- Intelligent Workflow
- Distinctive Design
- Intrinsic Quality



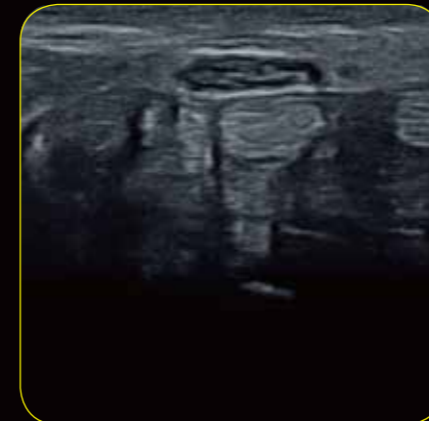
Highly sensitive color Doppler identifies low flow in this knee collection.



Exceptional near field detail clearly visualizes the brachial plexus nerve roots.



Excellent image uniformity and penetration demonstrates the sciatic nerve and popliteal vessels.



Incredible detail and contrast resolution defines the median nerve fascicles and adjacent tendons.

# Stunning Clarity

## Definitive imaging

Sleek design and user-friendly features are just part of the story. The Acclarix AX7 is designed to deliver amazing clarity and stunning image quality quickly.

- High fidelity, high-channel count architecture results in superb detail resolution, particularly at depth
- Tissue Adaptive Imaging (TAI) continuously and automatically optimizes imaging allowing more focus on the patient
  - In B-mode, TAI fine tunes multiple parameters to provide the best possible image quality
  - In Doppler, TAI automatically adjusts for flow state providing improved continuity, border detection and fill-in



# The Virtue of Value

How can Edan deliver so much innovation AND so much value? By capitalizing on the experience and expertise of a truly global enterprise. Acclarix technology is the result of Silicon Valley innovation and engineering excellence combined with Chinese design and manufacturing proficiency. The Acclarix AX7 delivers unmatched value and performance across a broad range of applications.

- MSK
- Anesthesia
- Physiatry
- Orthopedics
- Sports Medicine
- Vascular Access
- Rheumatology
- Pain Management